



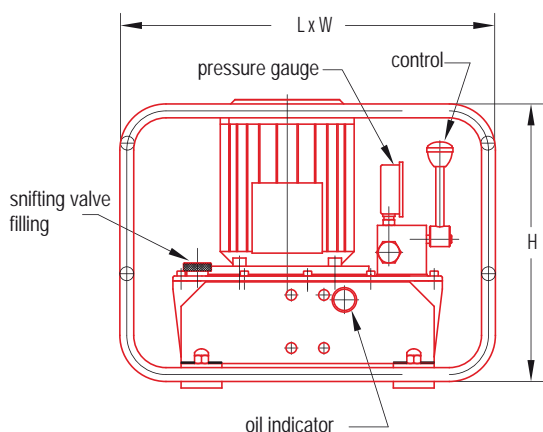
E.8.F.4.700.C

Specifications

- 0.75 kW three-phase 230/380V - 50 Hz electric motor
- Pressure 700 bar in continuous operation
- Constant flow rate 0.6 L/min
- Effective oil tank capacity 4 litres
- Adjustable external pressure limiter
- Pressure gauge diameter 63
- 3/8 NPT outlet oil connector
- Tubular protective chassis

On request

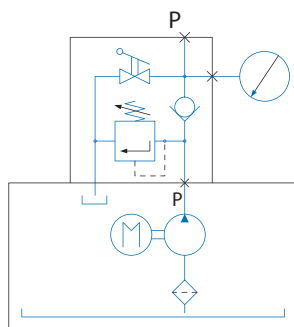
- 1.1 kW – 230V – 50Hz single-phase electric motor
- Quick couplers with protective caps
- Effective tank capacity 10 litres
- Specific distribution
- Magneto-thermal switch
- Electric cabinet and suspended button-operated unit



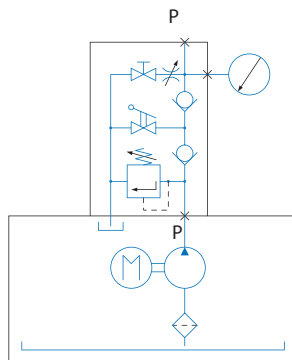
Versions*

- E.8.U : Single-acting cylinder control, with no load holding
- E.8.F : Single-acting cylinder control, with load holding, and braking valve
- E.8.D : Double-acting cylinder control with integrated indexed manual control valve
- E.8.SE : Single-acting control with electro-control valves and suspended button-operated unit
- E.8.DE : Double-acting cylinder control with electro-control valves and suspended button-operated unit

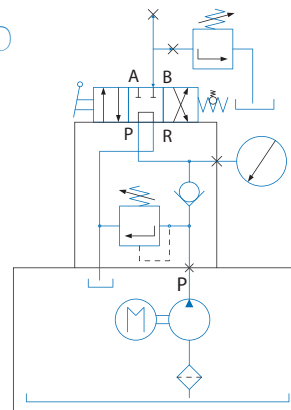
E8.U



E8.F



E8.D



Type	Power in kW	Working pressure in bar	Flow rates l/min		Oil capacity in litres	Size (dimensions in mm)			Mass in Kg
			Approach (100 b)	Working		Length	Width	Height	
E.8.*. 4.700	0,75	700		0,6	4	460	357	353	28
E.8.*. 10.700	0,75	700		0,6	10	510	420	400	38