

No-load flow rate of 0.35L/min and 0.2L/min at 700 bar



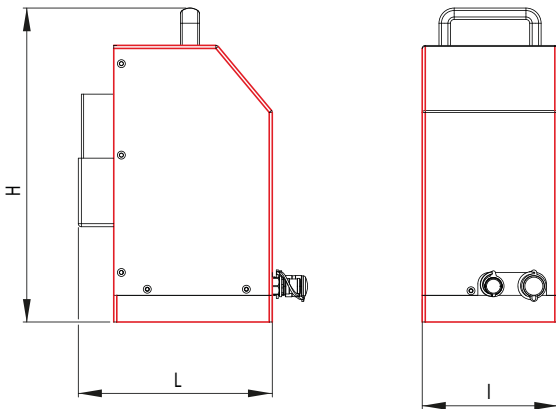
EA.04.DED.2-700

Specifications

- Direct current 345W electric motor
- Working pressure 700 bar
- No-load flow rate of 0.35 L/min and 0.2 L/min at 700 bar
- Effective oil tank capacity 2 litres
- Pressure gauge 0 - 1000 Bar
- Internal pressure limiter
- ¼ BSP outlet oil connector
- Protective cowling with handle
- Push-button-operated electric distribution
- High-capacity Lithium-Ion battery
- Single-phase 230V battery charger

On request

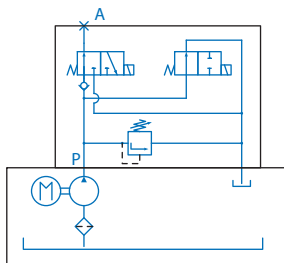
- Additional battery
- Quick couplers with protective caps
- Push-button-operated wired remote control



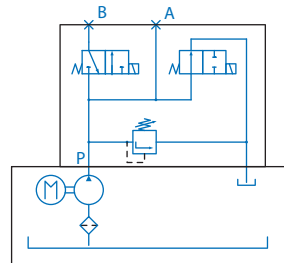
Versions

- EA.04.F.2.700 : Single-acting cylinder control, with load holding, and braking valve
- EA.04.SE.2-700 : Single-acting cylinder control with electrical control valve holding
- EA.04.DED.2-700 : Differential double-acting cylinder control with electrical control valve
- EA.04.DE.2-700 : Double-acting cylinder control with electrical control valve

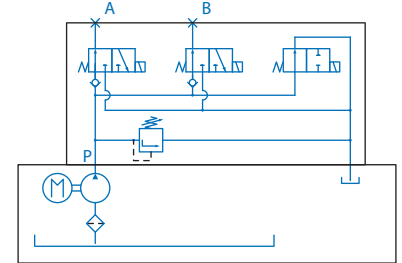
EA.04.SE



EA.04.DED



EA.04.DE



Type	Power in kW	Working pressure in bar	Flow rates l/min		Oil capacity in litres	Size (dimensions in mm)			Mass in Kg
			off-load	700 bar		Length	Width	Height	
EA.04.F. 2.700	0,345	700	0,35	0,2	2	260	225	420	12
EA.04.SE. 2.700	0,345	700	0,35	0,2	2	260	180	420	13
EA.04.DED. 2.700	0,345	700	0,35	0,2	2	260	180	420	13
EA.04.DE. 2.700	0,345	700	0,35	0,2	2	260	180	420	14