



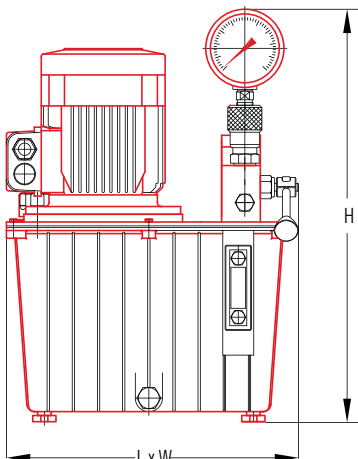
E.153.F.13.700.C equipped with 2DI unit with 2 separable outputs

Specifications

- 1.1 kW three-phase 230/380 V – 50Hz electric motor
- Pressure of 700 bar in continuous operation
- Automatic dual-flow rate pumps:
 - 5.4L/min in approach mode up to 100 bar
 - 0.8L/min in operation up to 700 bar
- Effective tank capacity 13, 22 and 50 litres
- Adjustable external pressure limiter
- Pressure gauge
- 3/8 NPT outlet oil connector

On request

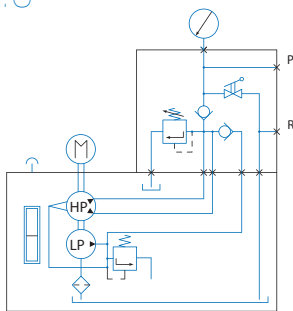
- Working pressure 1000 bar (E.20) with 1.5kW motor
- 1.5kW – 230V – 50Hz single-phase electric motor
- Quick couplers with protective caps
- Tanks of different effective capacities
- Specific distribution
- Offset distribution
- Magneto-thermal switch
- Electric cabinet and suspended button-operated unit
- Tubular protective chassis



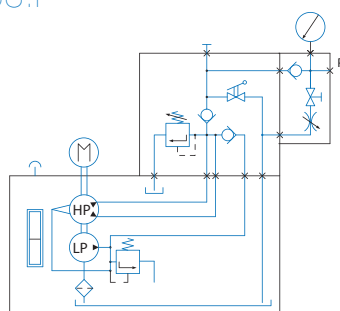
Versions*

- E.153.U : Single-acting cylinder control, with no load holding
- E.153.F : Single-acting cylinder control with load holding, and braking valve
- E.153.D : Double-acting cylinder control with integrated indexed manual control valve
- E.153.SE : Single-acting cylinder control with electro-control valves and suspended button-operated unit
- E.153.DE : Double-acting cylinder control with electro-control valves and suspended button-operated unit

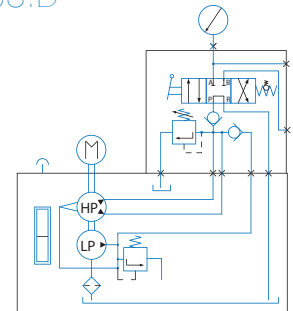
E153.U



E153.F



E153.D



Type	Power in kW	Working pressure in bar	Flow rates l/min		Oil capacity in litres	Size (dimensions in mm)			Mass in Kg
			Approach (100 b)	Working		Length	Width	Height	
E.153.*.13.700	1,1	700	5,4	0,8	13	395	295	562	42
E.153.*.22.700	1,1	700	5,4	0,8	22	490	340	625	55
E.153.*.50.700	1,1	700	5,4	0,8	50	520	465	720	113