



THB.13.F.10.700

Description

Lightweight, compact and autonomous, THB.13 hydraulic systems are powered by a petrol-fuelled combustion engine. As such, they are perfect for mobile applications, on worksites or in the field. The distribution can be adapted as needed.

Specifications

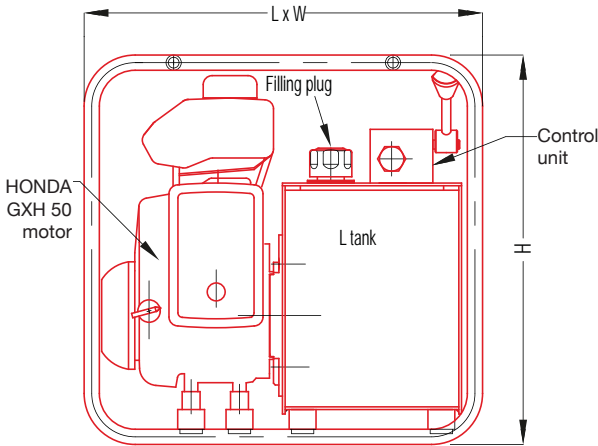
- 1.6 kW petrol-fuelled 4-stroke combustion engine
- Starter ignition
- Pressure 700 bar in continuous operation
- Automatic dual-flow rate pumps:
 - 5.3L/min in approach mode up to 100 bar
 - 0.6L/min in operation up to 700 bar
- Effective oil tank capacity 10 litres
- Adjustable external pressure limiter
- Pressure gauge
- Tubular protective and handling chassis
- 3/8 NPT outlet oil connector

On request

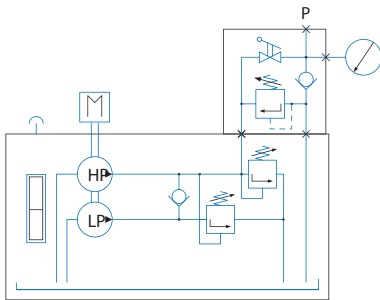
- Quick couplers with attached protective caps
- Specific distribution

Versions*

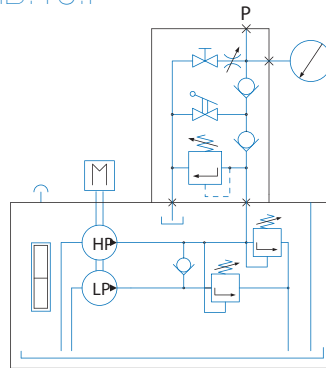
- THB.13.U : Single-acting cylinder control with no load holding
- THB.13.F : Single-acting cylinder control with load holding and braking valve
- THB.13.D : Double-acting cylinder control with integrated indexed manual control valve



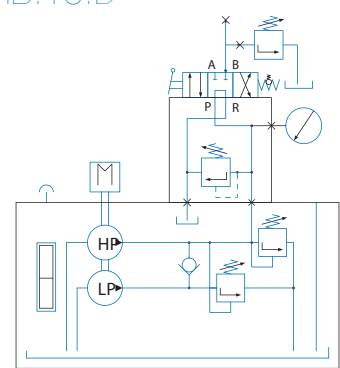
THB.13.U



THB.13.F



THB.13.D



Type	Power in kW	Working pressure in bar	Flow rates l/min		Oil capacity in litres	Size (dimensions in mm)			Mass in Kg
			Approach (100 b)	Working		Length	Width	Height	
THB.13.*.10.700	1,6	700	5,3	0,6	10	420	390	500	34