



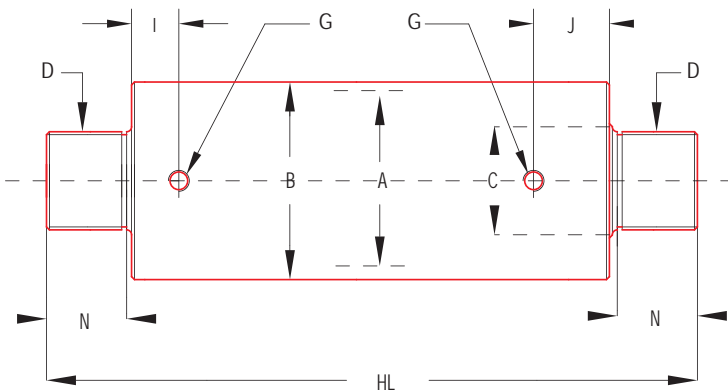
EKPS.50 cylinder equipped with pull rings

Description

These cylinders with separate pump suitable for use in all push and pull positions are controlled remotely. As for cylinders with built-in pumps (EKPI), they are used for welding, assembly or straightening work.

Specifications

- Force 10 to 50 tonnes
- Stroke 120 mm to 150 mm
- Differential remote power supply via BHC hand pump or with motor
- Smooth piston with anti-seizing, corrosion-proof treatment with wiper seal
- Flat thrust head, pull ring or female clevis
- Female 3/8 NPT oil intakes



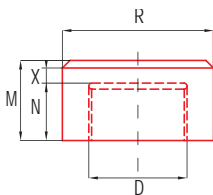
On request

- Different strokes
- Specific tackle
- Shafts for female clevises

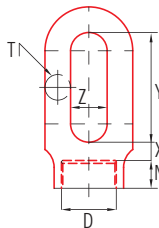
Cat Tonnes	Forces KN	Push		Pull		Stroke mm	Oil volume dm ³	P/N	Mass kg	Dimensions in mm								
		Cross-section cm ²	Pressure Bar	Cross-section cm ²	Pressure Bar					HL	A	B	C	D	G	I	J	N
10	98	12,57	781	12,94	758	150	0,2	EKPS.10	9	334	57	82	40	M35X2	3/8 NPT	18	50	30
25	245	33,18	740	30,44	806	150	0,5	EKPS.25	22	371	90	118	65	M50X3		23	60	40
50	490	63,62	771	69,08	710	150	1,04	EKPS.50	43	385	130	165	90	M65X3		25	60	40



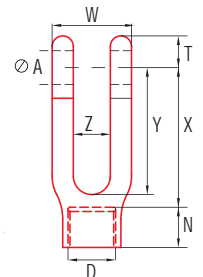
Flat thrust head



Pull ring



Female clevis



Cat Tonnes	Mass kg	Dimensions in mm					Cat Tonnes	Mass kg	Dimensions in mm					Cat Tonnes	Mass kg	Dimensions in mm								
		D	M	N	R	X			D	N	T	X	Y			Z	Ø A	D	N	T	W	X	Y	Z
10	0,4	M35X2	38	27	54	11	10	0,5	M35X2	27	16	10,5	75	25	10	2,2	32	M35X2	27	30	75	143	120	35
25	1,3	M50X3	50	38	80	12	25	1,8	M50X3	38	25	12	110	35	25	3,5	45	M50X3	38	45,5	80	139	122	40
50	2,1	M65X3	53	38	100	15	50	4,4	M65X3	38	35	22	150	50	50	14	60	M65X3	38	66	120	116	94	60